

Penn State Institutes of Energy and the Environment

Data Repositories

Maurie Caitlin Kelly  
November 18<sup>th</sup> 2010

- Pennsylvania Spatial Data Access: PASDA
- Fisheries and Aquatic Resources Node: FAR
- Mid Atlantic Information Node: MAIN
- ChesapeakeView
- Penn State Geospatial Commons

**PASDA** PENNSYLVANIA SPATIAL DATA ACCESS  
The Pennsylvania Geospatial Data Clearinghouse

Home About PASDA Download Data Online Mapping Recent Events Related Links Subsites Help

**Data Shortcuts**

- Aerial Photography
- Topographic Maps
- State-wide Data
- Browse FTP

**Download New Data**

PAMAP LIDAR data now available for download [Quick Link](#)>>

Allegheny County data now available in Mapservices and for download [Quick Link](#)>>

PAMAP Imagery Imagery now available in Mapservices and for download [Quick Link](#)>>

Welcome to PASDA

Pennsylvania Spatial Data Access (PASDA) is the official public access geospatial information clearinghouse for the Commonwealth of Pennsylvania and has served for twelve years as Pennsylvania's node on the National Spatial Data Infrastructure, Geospatial One-Stop, and the National Biological Information Infrastructure.

PASDA was developed by the Pennsylvania State University as a service to the citizens, governments, and businesses of the Commonwealth. PASDA is a cooperative project of the Governor's Office of Administration, Office for Information Technology, Geospatial Technologies Office and the Penn State Institutes of Energy and the Environment of the Pennsylvania State University. Funding and support is provided by the Pennsylvania Office for Information Technology, Geospatial Technologies Office. In addition, PASDA also receives substantial support from the Pennsylvania State University.

For more information about PASDA, see our [About PASDA](#) pages.

See the results of the [October 3rd, 2008 PASDA User Session](#).

PASDA is accessed by millions of users every year. Check out the current [PASDA STATS](#).

**Upcoming Events**

- Towson GIS Conference  
Towson University  
Towson, MD  
March 16-17, 2009
- Pennsylvania GIS Conference 2009  
Holiday Inn Hotel and Conference Center  
Grantville, PA  
May 19-20, 2009
- 2009 ESRI International User Conference (ESRI UC)  
San Diego  
Convention Center  
July 13 - 17, 2009

**Spotlight on GIS**

PA Fish & Boat Commission  
The PA Fish and Boat Commission has developed several interactive web GIS maps to promote a variety of fishing opportunities in Pennsylvania. The maps include PA Fishing and Boating County Guides, PA Fishing Hot Spots, Biologist Reports, and even Steelhead Fishing in Lake Erie Tributaries.

**URL:** <http://www.pasda.psu.edu>

**About the Program:** Pennsylvania Spatial Data Access is Pennsylvania's official public access geospatial data clearinghouse. PASDA started in 1996 with 35 data sets and metadata records. Currently, PASDA houses thousands of data sets and 30 terabytes of data from federal, state, local, regional, academic, and non-profit data partners.

# PASDA Facts & Background...

- PASDA started in 1996 w/ 35 data sets and metadata records
- PASDA currently maintains:
  - thousands of data sets, associated metadata, IMS, apps, etc
  - 30 terabytes of data contributed from partners in Federal, state, local, regional, & non-profit organizations
- PASDA participates in Geospatial One Stop and the National Biological Information Infrastructure—our metadata is harvested by both

# PASDA Facts & Background...

## Statistics over last 12 Months

- 12+ million uses accessing data, services, educational information
- More than 14 terabytes of data downloaded
- Over 7000 user support interactions (phone and e-mail)
- Over 4 million users of Internet Map Services and applications such as the PA Navigator

## How we Acquire Data

➤ Donuts, beer, wine, promises to create metadata...after beer and wine

## PASDA Data Acquisition

- Work directly with data partners to identify and acquire data
- Data is acquired based on:
  - Framework layers
  - Requests from users—weather and energy data
  - Specific important events (Hurricane Ivan flood event)
  - Legally mandated
  - Development of partnerships—local and regional governments
  - Was developed using state funds (Growing Greener or Rivers Conservation Programs)

## PASDA Data Appraisal

- Data creators are subject experts
- However, input from the community of users is always welcome. If a question or problem arises with the data, we bring it to the attention of data creators. This is one of the most effective ways of creating better data.
- Sometimes user comments will result in changes or updates. Other times, users may be using data that is not really meant to be used in a certain way.



## Data Retention Approach

- Though storage is not necessarily cheap... We keep everything!
- All imagery is stored and access is provided
- For other data sets, most recent is provided but we will provide access to archived data sets (PennDOT roads for example)

## Data Access Approach

- Stored on FTP site for direct download of original files
- Included in data viewing and download apps like the PA Imagery Navigator or PA Atlas (have search, identify, viewing, and download functions).
- Develop Internet Map Services for all data—data can be imported directly into desktop software
- Develop KML files for all data—for viewing in Google Earth
- All data is also “viewable” in our Data Previewer (an open layers app focused on the non GIS user)



PASDA

# PENNSYLVANIA SPATIAL DATA ACCESS

The Pennsylvania Geospatial Data Clearinghouse

[Home](#)

[About PASDA](#)

[Download Data](#)

[Online Mapping](#)

[News & Events](#)

[Related Links](#)

[Tutorials](#)

[Help](#)

## Filter Results

53 Total Results

[View All](#)

### Filter by Category

[Addresses & Places \(0\)](#)

[Atmosphere \(52\)](#)

[Biology \(0\)](#)

[Boundaries \(0\)](#)

[Economy \(0\)](#)

[Elevation \(0\)](#)

[Environ. Resources \(51\)](#)

[Farming \(0\)](#)

[Geology\(0\)](#)

[Health \(0\)](#)

[Imagery & Base Maps \(0\)](#)

[Inland Waters \(0\)](#)

[Man-Made Structures \(0\)](#)

[Military Intel. \(0\)](#)

[Oceans \(0\)](#)

[Planning & Landuse \(0\)](#)

[Society & Culture \(0\)](#)

[Transportation \(0\)](#)

[Utilities \(0\)](#)

### Filter by Access Type

[FTP \(2\)](#)

## Search Results



[View Your Data Cart](#)



[Return to Search Page](#)

[FTP Download -](#)

[Data Applications & Viewers -](#)

[Add To Your Data Cart For Download -](#)

[MapServices \(ArcMap/GoogleEarth/WMS\) -](#)

Title	Originator	Date			
<b>Hurricanes Major 1851 - 2004</b>	National Weather Service (NOAA/NWS)	2005			
<b>National Average Ozone Concentration 01 1 hr - NDGD</b>	National Weather Service (NOAA/NWS)	2010			
<b>National Average Ozone Concentration 08 8 hr - NDGD</b>	National Weather Service (NOAA/NWS)	2010			
<b>National Apparent Temperature Forecasts - NDFD</b>	National Weather Service (NOAA/NWS)	2010			
<b>National Average vertical column smoke from fires Forecasts - NDGD -- Air Quality</b>	National Weather Service (NOAA/NWS)	2010			
<b>National Dew Point Temperature Forecasts - NDFD</b>	National Weather Service (NOAA/NWS)	2010			
<b>National Maximum Temperature Forecasts - NDFD</b>	National Weather Service (NOAA/NWS)	2010			
<b>National Minimum Temperature Forecasts - NDFD</b>	National Weather Service (NOAA/NWS)	2010			
<b>National Precipitation Amount Forecasts - NDFD</b>	National Weather Service (NOAA/NWS)	2010			



## Plants, Animals & Fisheries & Aquatic Resources

BACK TO: Plants, Animals & Other  
Organisms

Fisheries & Aquatic Resources

[About the Node](#)

[Clearinghouse](#)

[Developing Standards](#)

[Partnership Projects](#)

[Regional Projects](#)

[Species Projects](#)

### Fisheries and Aquatic Resources

*Bringing together people and information to promote fisheries  
conservation*

The FAR Node will serve as an integrated, comprehensive, web-based resource that will aid restoration and conservation efforts. To accomplish this, the FAR node is being developed with four goals:

1. Provide access to information via [species](#) and [geographic](#) approaches.
2. Develop a [clearinghouse](#) of FAR-related information.
3. Promote the development of [standards](#) for FAR-related data.
4. [Partner](#) with existing programs to enhance fisheries applications.

**Find out about a species near you with the US Fish Explorer!**

## National Biological Information Infrastructure Fisheries and Aquatic Resources Node (FAR)

URL: <http://far.nbii.gov>

**About the Program:** The FAR node is a part of the USGS National Biological Information Infrastructure which is comprised of thematic and regional data nodes. FAR works with partners across the US and abroad to develop data sharing agreements, create unique applications, and promote education and conservation of fisheries and aquatic environments.

# Geographic Perspectives

## Mid-Atlantic

**BACK TO: Geographic Perspectives**

Mid-Atlantic

[About the Node](#)

[Featured Projects](#)

[Human Impacts](#)

[Maps and Geospatial Data](#)

[News and Events](#)

[Outreach & Education](#)

[Regional Resource  
Management and Planning](#)

[Resources](#)

### Welcome to the Mid-Atlantic Information Node

The Mid-Atlantic Information Node (MAIN) is a regional node of the National Biological Information Infrastructure (NBII) encompassing Delaware, Maryland, Pennsylvania, Virginia, West Virginia, and the District of Columbia. Our primary mission is to facilitate access to and use of the biological resource information that is available for the region.

To learn more about the MAIN and our mission, please visit our [About the Node page](#).



BLUE HERON [COPYRIGHT: NBII  
DIGITAL IMAGE LIBRARY]


## National Biological Information Infrastructure Mid-Atlantic Information Node (MAIN)

URL: <http://main.nbii.gov>

**About the Program:** MAIN began in 2004 and serves as a regional node for five states and the District of Columbia. MAIN is an effort to integrate biological information by region covering numerous themes, species, and habitats.

## MAIN/FAR Data Acquisition & Appraisal

- Works directly with data partners to identify and acquire data
- Data is acquired based on:
  - Scientific projects funded by USGS/NBII
  - Requests from users or data producers
  - Specific important initiatives—Eastern Brook Trout
  - Development of partnerships
  - No legal mandate
- Data is appraised by scientists, biologists—the data creators
- Some is shared, some in closed systems due to sensitivity (sturgeon)

[home](#)[data](#)[partners](#)[education](#)[news & events](#)[about](#)[contact](#)

*chesapeakeview*

## Welcome to *ChesapeakeView*



**ChesapeakeView** is a collaborative project of the AmericaView program. **AmericaView (AV)** is a nationwide program that focuses on satellite remote sensing data and technologies in support of applied research, K-16 education, workforce development, and technology transfer.

**ChesapeakeView** is the first regional **AmericaView** initiative. The purpose of the **ChesapeakeView** project is to facilitate access to remotely sensed data related to the Chesapeake Bay region. This effort seeks to highlight the data resources of the **AmericaView** partners in the Chesapeake Bay region including Maryland, New York, Pennsylvania, Virginia, and West Virginia.

### Why focus on the Chesapeake Bay?

### Our Partners

[AmericaView](#)[MarylandView](#)[New YorkView](#)[PennsylvaniaView](#)[VirginiaView](#)[West VirginiaView](#)

### Upcoming Events

[EPA Meetings on the Chesapeake Bay Science for the Future of the Bay](#)[ASPRS 2010 Fall Conference](#)[ASPRS 2011 Annual Conference](#)





*chesapeakeview*

## Data Search

Use the Data Search to discover and access spatial (GIS) data!

To get started, perform a search and then explore the ways you can access the data you find...

- Download Data.
- Add multiple datasets to your *data cart* for processing and download.
- Access datasets via online maps, WMS services, or direct connections in ArcGIS.

## Data Search

Search for datasets using one of the following options:

### Search by Keyword(s):

To combine multiple keywords, type the words below and select one of the following options:  AND  OR

### Search by Data Provider:

### Search By Region:

### Search by Map:

### Browse All Data

List datasets available via Internet MapServices



*chesapeakeview*



## Search Results

2 datasets matched your search criteria.

Click a dataset's title to view its metadata

Click one of the icons described below to access the data (not all options are available for every dataset)...

-  Download data directly to your computer.
-  View or learn more about the dataset in a separate Website.

## Search Results



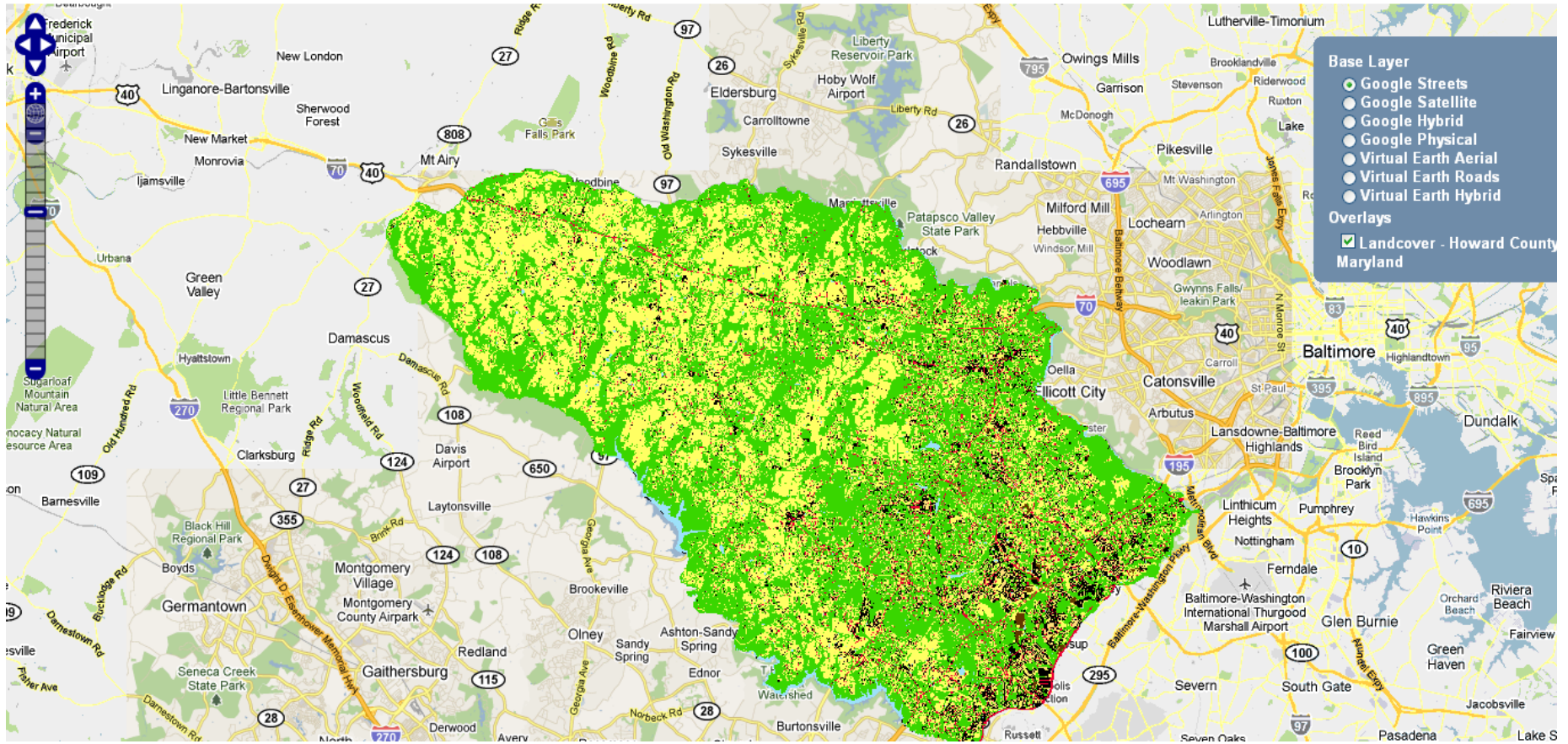
[View Your Data Cart](#)



[Return to Search Page](#)

FTP Download  
Data Applications & Viewers  
Add To Your Data Cart For Download  
MapServices (ArcGIS/WMS)

Title	Originator			
<a href="#">Land Cover Jefferson County, West Virginia</a>	University of Vermont Spatial Analysis Laboratory	2007		
<a href="#">Landcover - Howard County, Maryland</a>	University of Vermont Spatial Analysis Laboratory	2007		



## ChesapeakeView Data Acquisition

- ChesapeakeView was a collaborative effort.
- PSU, Cal U of PA, West Virginia U, Virginia Tech, Suny Syracuse, AmericaView program, and Towson worked together to identify data that should be included
- These AmericaView partners have frequent team calls to keep info up to date and identify new data or collections to include.

## Penn State Geospatial Commons

- Effort spanning about 5 years
- Focused on
  - continuation of existing geospatial data resources
  - Acquiring new data to benefit the university
  - Address issues and needs related to NSF and other funding agency data requirements
  - Document research activity at PSU
  - Provide a jumping off point for major geospatial efforts





Pennsylvania Energy Data Portal ...the portal to energy data for exploration, research, workforce development, and education for Pennsylvania

[Home](#)

[Fossil Fuels Data](#)

[BioMass Data](#)

[Wind Energy Data](#)

[Solar Energy Data](#)

[PA Energy Atlas](#)

[Workforce  
Development](#)

[Contact Us](#)

## Welcome!

Energy is a critical issue for many Pennsylvanians today and will likely continue to be in the foreseeable future. The Pennsylvania Energy Data Portal supports access to energy related data, provides data storage for data from research to workforce development and education, and offers visualization capabilities via Google Earth and Google Maps.

### Data Highlights

[National Renewable Energy Lab Data](#)  
Solar potential, biomass resource assessment, wind resource maps, and wind potential.

[PAMAP LIDAR](#)  
Digital Elevation Models, contour enhancement lines, and topographic contours.

[Pennsylvania Department of Environmental Protection](#)  
Coal mined areas, oil & gas well locations, and industrial mining operations.

[NOAA--NWS](#)  
Wind speed, wind gusts, and wind direction.

### Online Mapping

[The Pennsylvania Energy Atlas](#)  
View data, create energy and workforce related maps...and more

[Energy Data Map Services](#)  
RBring data to your desktop with our map services

[View Data in Google Earth](#)  
See data in the Google Earth interface

URL: <http://www.energydata.psu.edu> (in development)

About the Project: The PA Energy Data Portal is an pilot effort to highlight existing and future energy related data for the state. The portal can also highlight Penn State data related to energy research and development.



- > **About NoiseQuest**
- > **About Airports**
- > **Noise Basics**
- > **Sources of Aviation Noise**
- > **Sources of Non-Aviation Noise**
- > **What does Noise Affect?**



## NOISEQUEST

**URL:** <http://www.noisequest.psu.edu>

**About the Program:** NoiseQuest is a research based educational website that provides information to the public on issues related to sound and airports. The goal of NoiseQuest is to develop and maintain a website that is a resource for both airports and communities, and that provides educational information on aviation noise. Our goal is to have a user friendly, informative site that is readily accessible to the public and that enhances airport and community relationships.